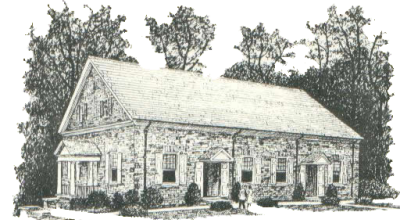


Westtown Monthly Meeting
Westtown, Pennsylvania

November 2018



Dear Westtown Meeting Member and Friend,

We hope this letter finds you well. Whether you live close by and worship with us regularly, or whether you live at a distance, we value the gifts you bring to Westtown Monthly Meeting. The Meeting needs the help of **all of its members** to accomplish the good works of the meeting. **Some of this help is labor; some is financial.** We all contribute in the ways we are able; all our contributions are vitally important. This letter is an appeal for financial contributions. Each year in the budget process, a recommended amount per member is calculated based on the anticipated budget and the number of Meeting members. This number is a recommendation only; we all have a different ability to give, and each member contributes the amount he or she is able.

The request for the fiscal year 2018-2019: \$500 per adult member.

There are two ways to make a contribution.

- Contribute through Philadelphia Yearly Meeting's online giving service. (Recommended)
Type or paste this into your browser address bar to give online:
<https://secure.acceptiva.com/?cst=f0f5fd>
- Send a check to Assistant Treasurer Marc Dear. You can use the attached Contribution Request at the end of this note.

The financial gift you make to the Meeting is important, but it is not the only commitment we ask of our members. Other contributions that are vitally important to the life of Westtown Meeting include attending worship, committee meetings, and meeting for business; helping to host coffee and refreshments after meeting or lake suppers during the summer, and supporting special projects such as the plant sale and advent garden.

Remember: the meeting needs **our time, spiritual energy, and money** to remain a vibrant community. Thank you for all that you give.

Elson Oshman Blunt
Treasurer

P.S. See the back of this page for a list of the organizations we support!

What are Westtown Monthly Meeting contributions used for?

We are blessed to share a space with Westtown School and Oak Lane Day Care; as a result, our overhead expenses are low and most of our money goes directly to good work in our local community and throughout the world. We have committed to spending more than \$26,000 (about 85% of our budget) to support the following this coming year:

- **Philadelphia Yearly Meeting** has an extensive ministry both in the Philadelphia area and beyond. The largest share of our budget goes towards supporting its programs.
- **Concord Quarter.** Our pledged contribution includes support for the salary of our Quarter's Coordinator, scholarships for students throughout the quarter to attend Friends schools, and our contribution to the Quarter's operating fund.
- **First Day School Teachers** for our own Meeting. By offering a modest payment to our teachers, we can continue to ensure the quality and consistency of the experience for our children attending FDS.
- **Education Grants** can help children of our own Meeting members attend Westtown School and other Friends schools and colleges.

At the end of the fiscal year, we determine how much money we have left over in our budget for additional contributions to groups that are doing good work in the world, both locally and internationally. We are committed to supporting the following four organizations:

- **Westtown School** is our neighbor and an invaluable support to Westtown Meeting in many ways.
- **Oak Lane Day Care** is the Quaker daycare and preschool with whom we share a space in the basement of the school's meetinghouse.
- **Friends Committee on National Legislation** is the Quaker lobby promoting a peaceful resolution to conflict, environmental stewardship, and equality on the national level
- The **American Friends Service Committee** works for peace and social justice around the world.

Last year, we also had funds to support the following local organizations:

- **Safe Harbor of Chester County**, a homeless shelter here in West Chester.
- **ACT in Faith of Greater West Chester**, a local organization that helps low-income people obtain basic supplies for their homes and avoid evictions.
- **New Sanctuary Movement of Philadelphia**, an interfaith immigrant justice organization.
- **Ceasefire PA**, a violence intervention organization working for gun control.

None of these contributions would be possible without your support!

*****If using US Mail: print out the stub below and mail with your check.*****

Suggested Contribution per Adult Member: \$500

Name(s) _____

I (We) contribute _____ per adult member for a total of _____ enclosed.

() Check here to request a receipt for the enclosed contribution sent to the mail/email address below:

My mail/email address for receipt:

Checks should be made payable to Westtown

Monthly Meeting and sent to:

Marc Dear, Assistant Treasurer

Westtown Monthly Meeting

1222 Mallard Rd

West Chester PA 19382